

*The Symbols*  
of  
**North Carolina**  
An Educational Coloring Book



Illustrated and written by select art students of the 2012–2013 8th grade class at  
Mooreville Middle School.

# SCUPPERNONG GRAPE

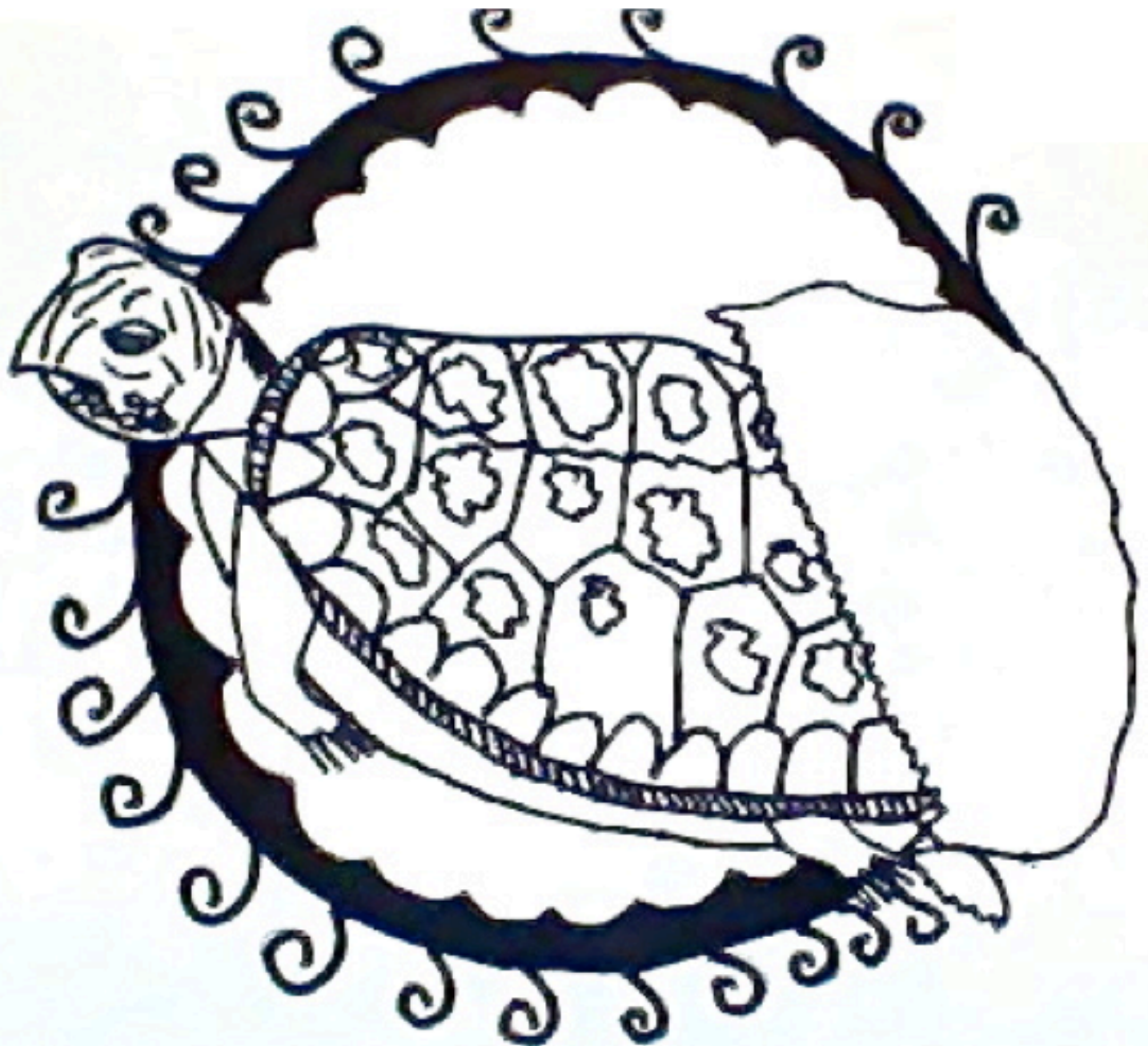


The Scuppernong Grape is the fruit of North Carolina. They designated it as the official state fruit in the year 2001. The Scuppernong Grape can be found in the piedmont, coastal plain, and the tidewater region. The grape industry produces \$813 million for the state each year. The Scuppernong Grape was discovered in 1524.

Statesymbolsusa.org (2001) *North Carolina State Fruit - Scuppernong Grape*. [online] Available at: [http://www.statesymbolsusa.org/North\\_Carolina/fruit\\_scuppernonggrape.html](http://www.statesymbolsusa.org/North_Carolina/fruit_scuppernonggrape.html) [Accessed: 25 Sep 2012].



# Eastern Box Turtle



The Eastern Box Turtle is the official state reptile of North Carolina as of 1979. It can be found anywhere in the state, mainly in wooded areas with water. The Box Turtle is an endangered species, which lives to be up to 30 years old. Box Turtles are killed mainly because of building that brings down the wooded areas it lives in. They are also killed because of highways. Did you know that if you bring a turtle home and then set it free near your house, it'll search for its old home until it dies?

# Dogwood

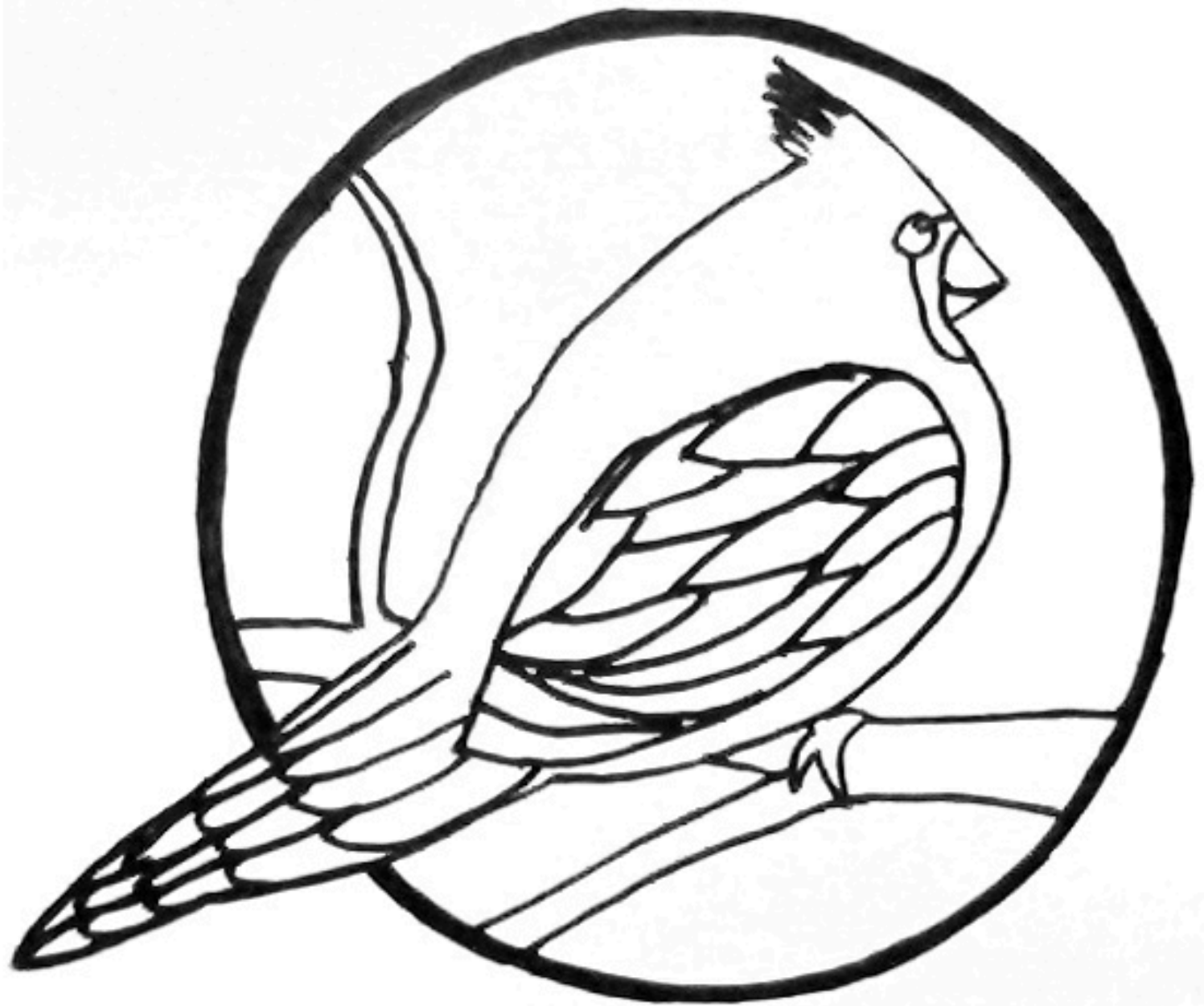


The Dogwood is the state flower of North Carolina. This flower can be found in all parts of state and was adopted as the state flower in 1941. Legend says that the Dogwood used to grow high and tall, but when it was cut down to make Jesus's cross, he promised it that it would never grow large enough to be used for that purpose again. The flower it produces looks like a cross and that the red leaves look like Christ's blood on Calvary Mountain. Dogwood is sometimes used in making Golf clubs. It also has many medical uses. Dogwoods are sometimes cut down and used in many different types of woodwork. This brings in money because we can sell goods made out of the dogwood.

Netstate.com (1917) *North Carolina State Flower Dogwood Cornus florida*. [online] Available at: [http://www.netstate.com/states/symb/flowers/nc\\_dogwood.htm](http://www.netstate.com/states/symb/flowers/nc_dogwood.htm) [Accessed: 23 Oct 2012].



# Cardinal



The Cardinal is the official bird of North Carolina. The Cardinal was adopted as the state bird in 1943 and lives in all of North Carolina's regions. It is against the law to hunt Cardinals. The Cardinal is red and black and has a small, orange beak.

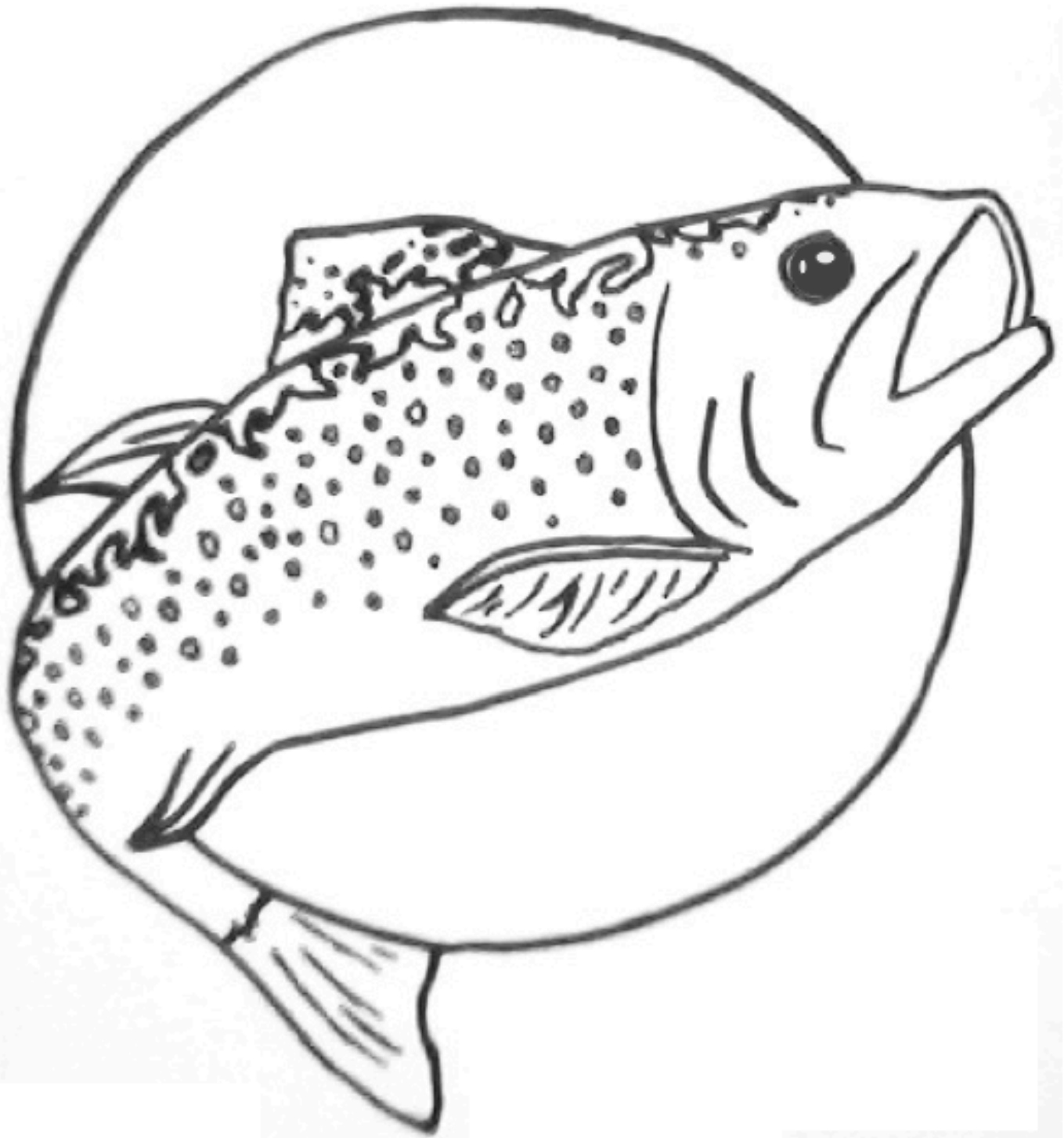
# Grey Squirrel



The grey squirrel is the official state mammal in NC. It is found all through out NC and was adopted in 1969. There name was credited from the old Greek word Skiouros. In earlier days it was a abundant food source for people.

Statesymbolsusa.org (1969) *North Carolina State Mammal – Gray Squirrel*. [online] Available at: [http://www.statesymbolsusa.org/North\\_Carolina/mammal\\_graysquirrel.html](http://www.statesymbolsusa.org/North_Carolina/mammal_graysquirrel.html) [Accessed: 21 Sep2012].<http://ncpedia.org/symbols/mammal>

# BROOK TROUT



The Brook Trout is North Carolina's state trout. Its unique patterns and colors make this fish easy to spot in the Mountain Region along NC. The Brook Trout, when an adult, ranges between 5-15 inches. More fish are produced during the winter, when the female lays thousands of eggs beneath the gravel. This colorful fish provides North Carolina with food, because they are fished for fun, but often eaten.

The troutmaster.com. "Brook Trout History and Facts." N.p., 2012. Web. 5 Oct 2012. [<http://www.thetroutmaster.com/Brook-Trout-History.asp>]; Dictionaryoffish.com. "Brook Trout facts." N.p., 2006. Web. 5 Oct 2012. [[http://www.dictionaryoffish.com/brook\\_trout.htm](http://www.dictionaryoffish.com/brook_trout.htm)]; Atlanticpanic.com. "Brook Trout Fish Facts - AtlanticPanic." N.p., 1985. Web. 5 Oct 2012. [<http://www.atlanticpanic.com/species/view/brook-trout/>].



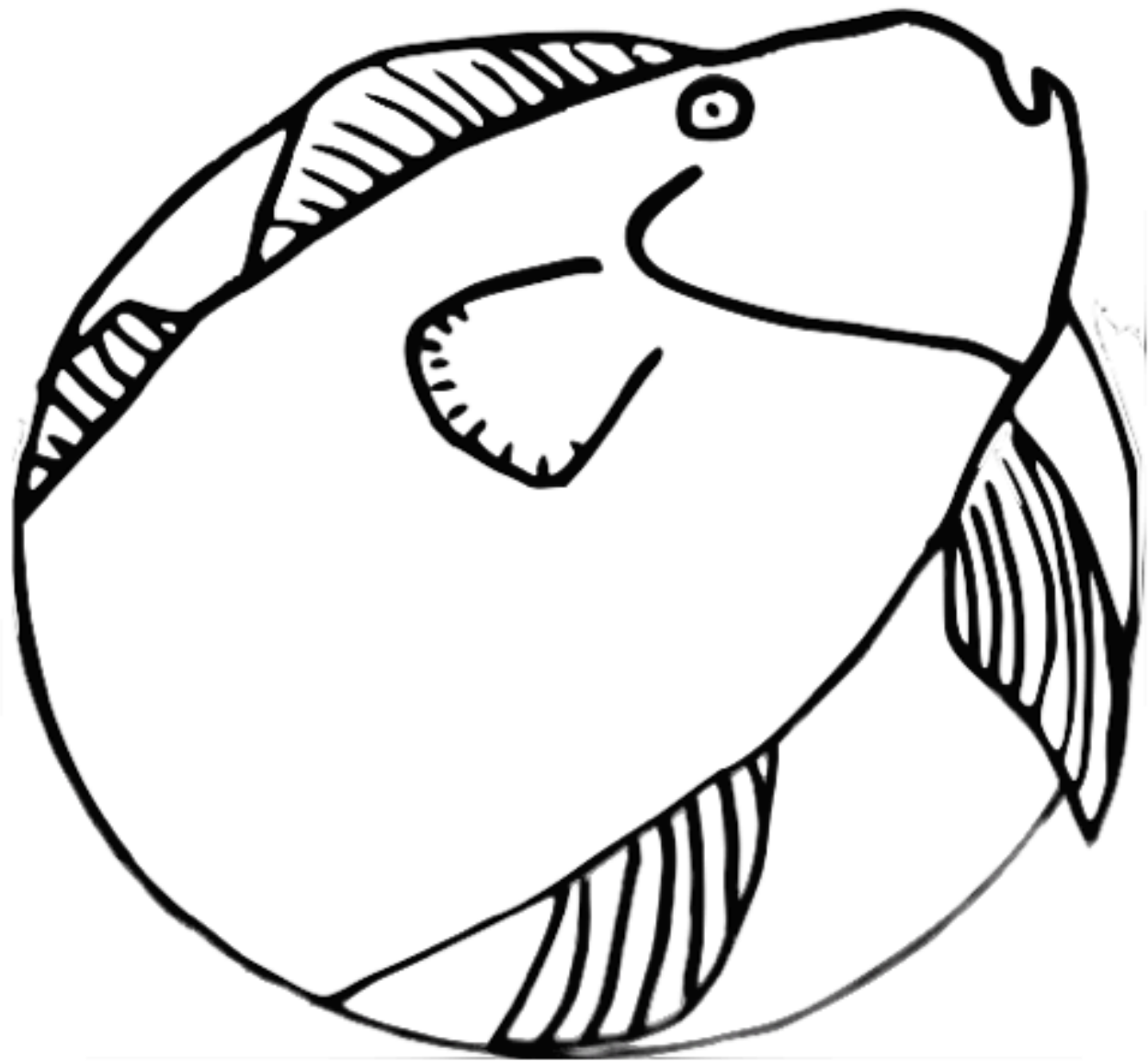
# Carolina Lily



This is an illustration of the Carolina Lily, which is the official wildflower of North Carolina. It grows in all of the regions in North Carolina equally. It became the official wildflower of NC in 2003. This flower helps North Carolina's economy by being picked and sold with other assorted flowers in bouquets. It was named after Andre Michaux, who was a naturalist and explorer in the eighteenth century.



# Channel Bass

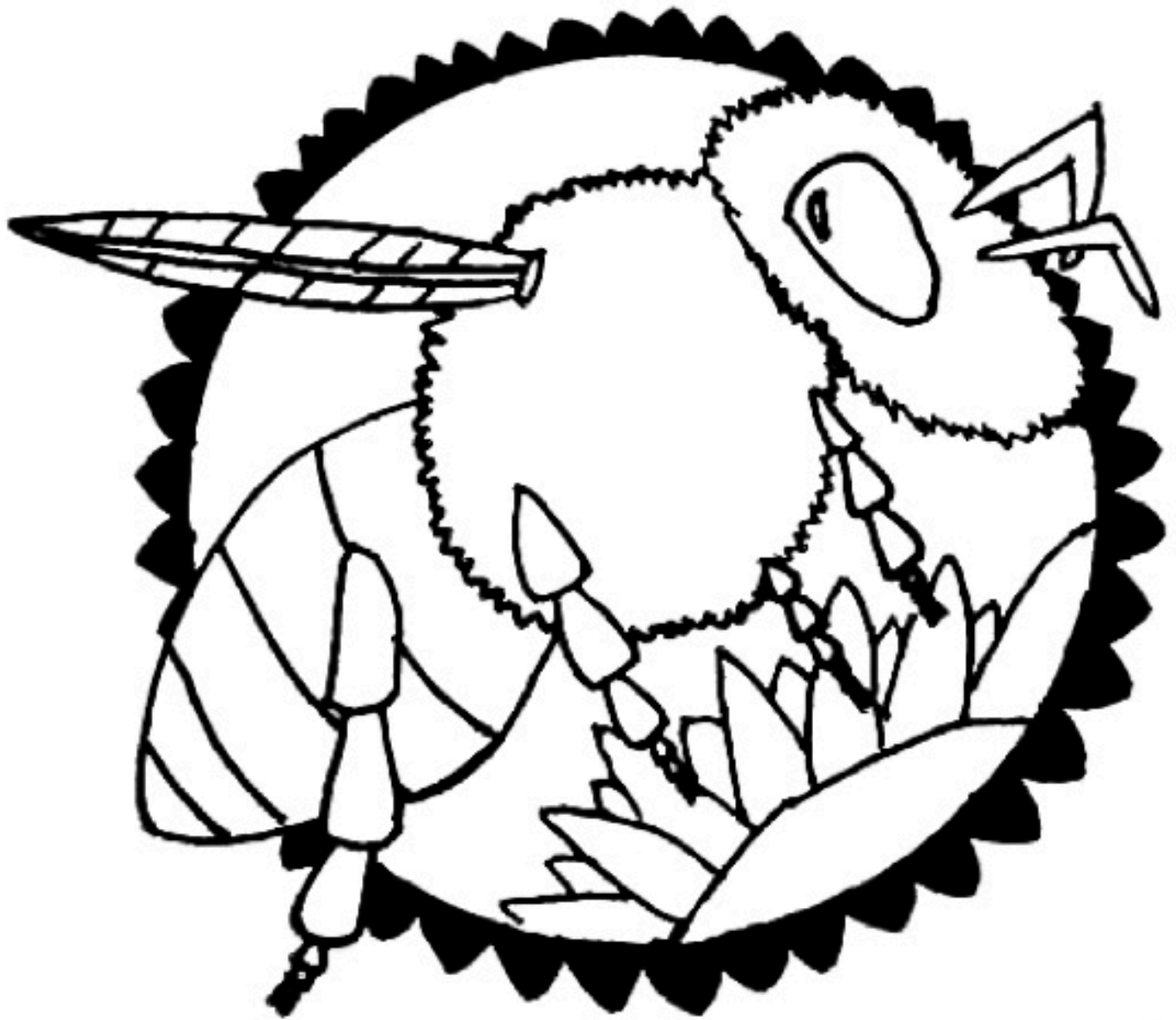


The channel bass, also known as the red drum, was announced as the official State Salt Water Fish in 1971. The channel bass likes to travel in large groups and is most commonly found in the Tar Heel coastal waters. It averagely weighs between 30 and 40 pounds, though the largest known weighed about 75 pounds. They are expected to live about 37 years, although that can be shortened by predators and fishermen. The channel bass helps the economy of North Carolina by being a good fisherman's target for their location and size.

Ncpedia.org (2012) *Salt Water Fish, Channel Bass* | NCpedia. [online] Available at: <http://ncpedia.org/symbols/saltwaterfish> [Accessed: 26 Sep 2012].

Atoztheusa.com (2001) *North Carolina: Fish*. [online] Available at: <http://www.atoztheusa.com/states2.asp?nid=9&cid=35> [Accessed: 26 Sep 2012].

# HONEYBEE



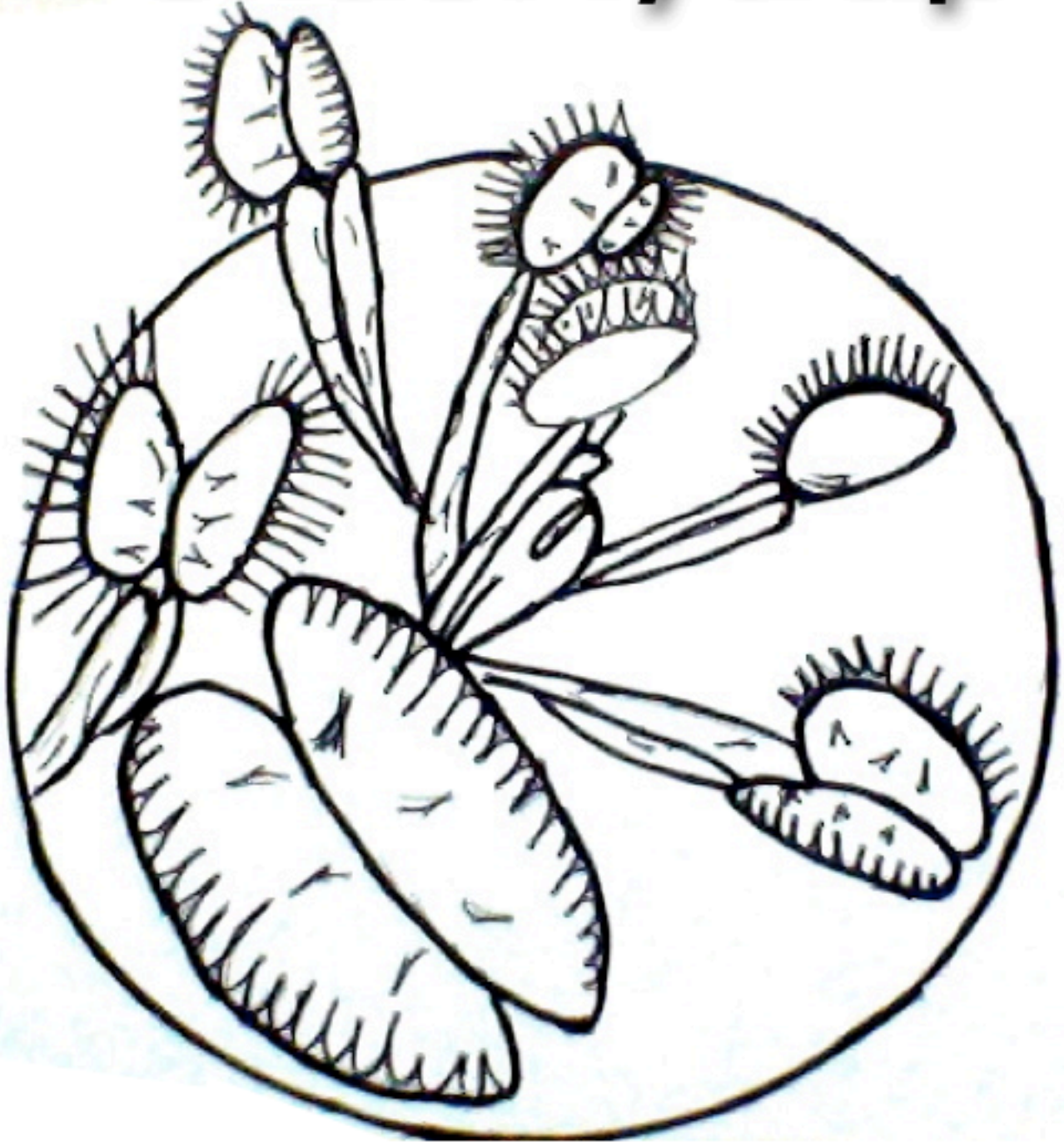
The honeybee has been the state insect of North Carolina since 1973. The honeybee is most abundant in the Piedmont region of North Carolina, because they can thrive more there. Speaking of thriving, up to 80,000 individuals can thrive in a single honeybee hive. As a result of there being so many, they can produce 2 million dollars of honey in North Carolina. It also helps North Carolina by pollinating the crops. The honeybee is a very important figure in North Carolina.

\*Secretary.state.nc.us (1973) *Honey Bee – North Carolina State Insect*. [online] Available at: <http://www.secretary.state.nc.us/pubsweb/symbols/sy-bee.htm> [Accessed: 26 Sep 2012].

\*Ncpedia.org (2006) *Insect, Honeybees* | NCpedia. [online] Available at: <http://ncpedia.org/symbols/insect> [Accessed: 26 Sep 2012].

\*Unknown. (2011) *Mass Extinction of Honey Bees Will Cause One-Third of Food Supply To Disappear*. [image online] Available at: <http://lightmags.wordpress.com/2011/11/22/mass-extinction-of-honey-bees-will-cause-one-third-of-food-supply-to-disappear/> [Accessed: 9/26/12].

# VenusFlytrap



The Venus Flytrap is the official carnivorous plant of NC. It was adopted in 2005. Venus Flytraps grow naturally on the coast of North and South Carolina (Tidewater region). Each trap has a total of six trigger hairs, or three on each lobe. When it catches a bug, jail like spike bars trap the bug inside so it won't get out. Venus Flytraps grow in poor soil, which is why they eat bugs. They get the nutrients from insects that they don't get from the soil. Venus Flytrap plants even catch and digest small frogs.

"Carnivorous Plant." *Carnivorous Plant, Venus Flytrap*. N.p., n.d. Web. 26 Sept. 2012. <<http://ncpedia.org/symbols/carnivorousplant/>>.

"Venus Flytrap Facts." *Venus Flytrap Facts*. N.p., n.d. Web. 26 Sept. 2012. <<http://venusflytrapcenter.com/venus-flytrap-facts/>>.

"Welcome to My State History!" *Welcome to My State History!* N.p., n.d. Web. 26 Sept. 2012. <[http://www.mystatehistory.com/north\\_carolina/Default.aspx](http://www.mystatehistory.com/north_carolina/Default.aspx)>.



# Strawberry



The Strawberry is NC Symbol I am illustrating. It is the official red berry of North Carolina. The region of North Carolina where the strawberry is found in is the Piedmont Region. The year it was adopted as NC's state symbol was in 2001. An interesting fact I learned about the strawberry is that there is a museum in Belgium that was just made for strawberries. The strawberry contributes to NC's economy by contributing to good health, good nutrients, and it also brings in more money.

# PINE TREE



This is a pine cone that grows on pine trees. It is an official north carolina symbol. Pine trees are found in the mountains and the piedmont. It was introduced in to north carolina symbols in 1963. The pine tree helped North Carolina with the wood products.

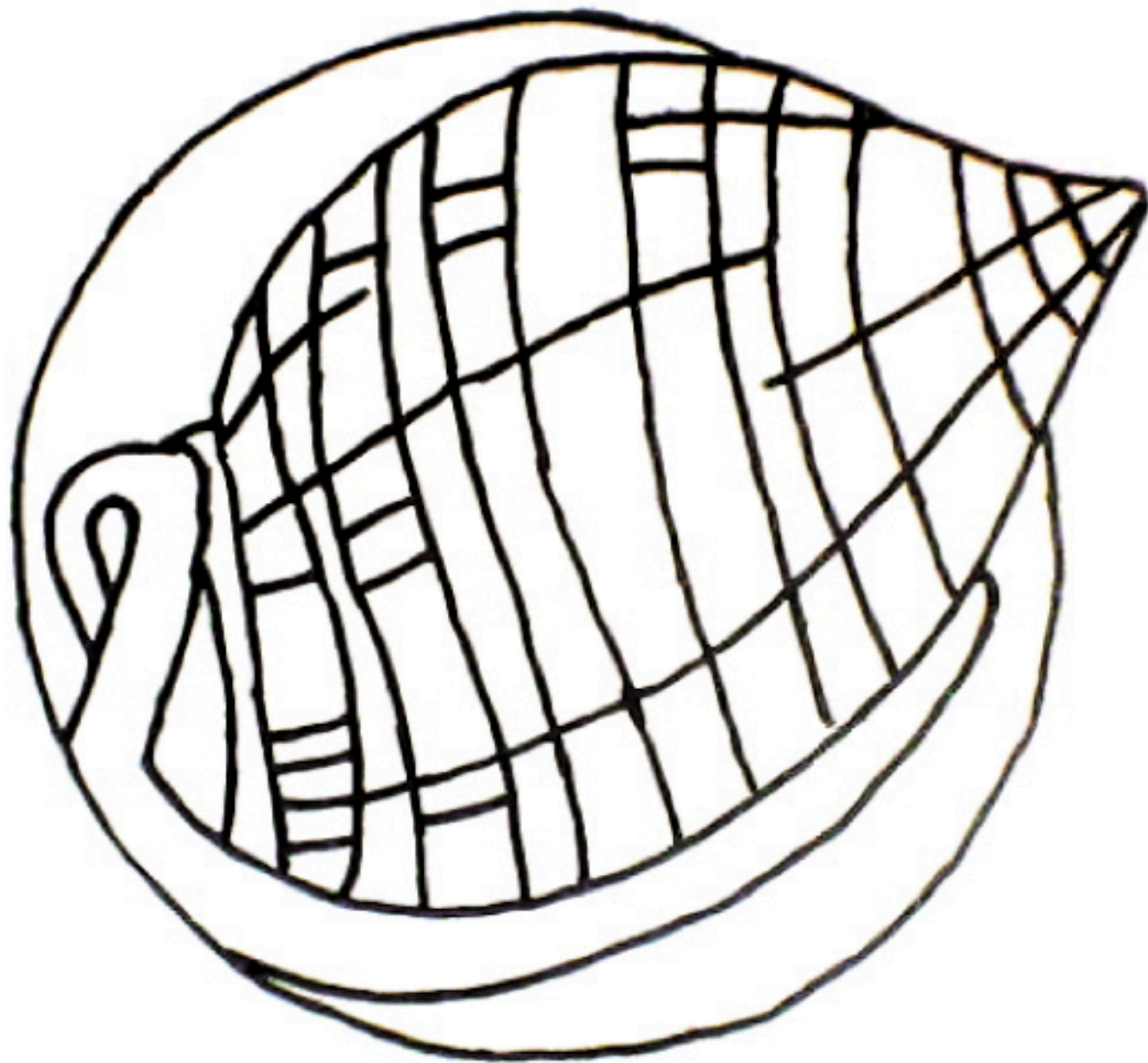
# Plott Hound



The Plott Hound is the official state dog of North Carolina. It originates in the mountains of NC and was adopted as the state dog in 1989. The Plott Hound is the only hound that's registered to have originated in NC. This dog contributes to NC's economy because the Plott Hound is bred for hunting and many people buy them.



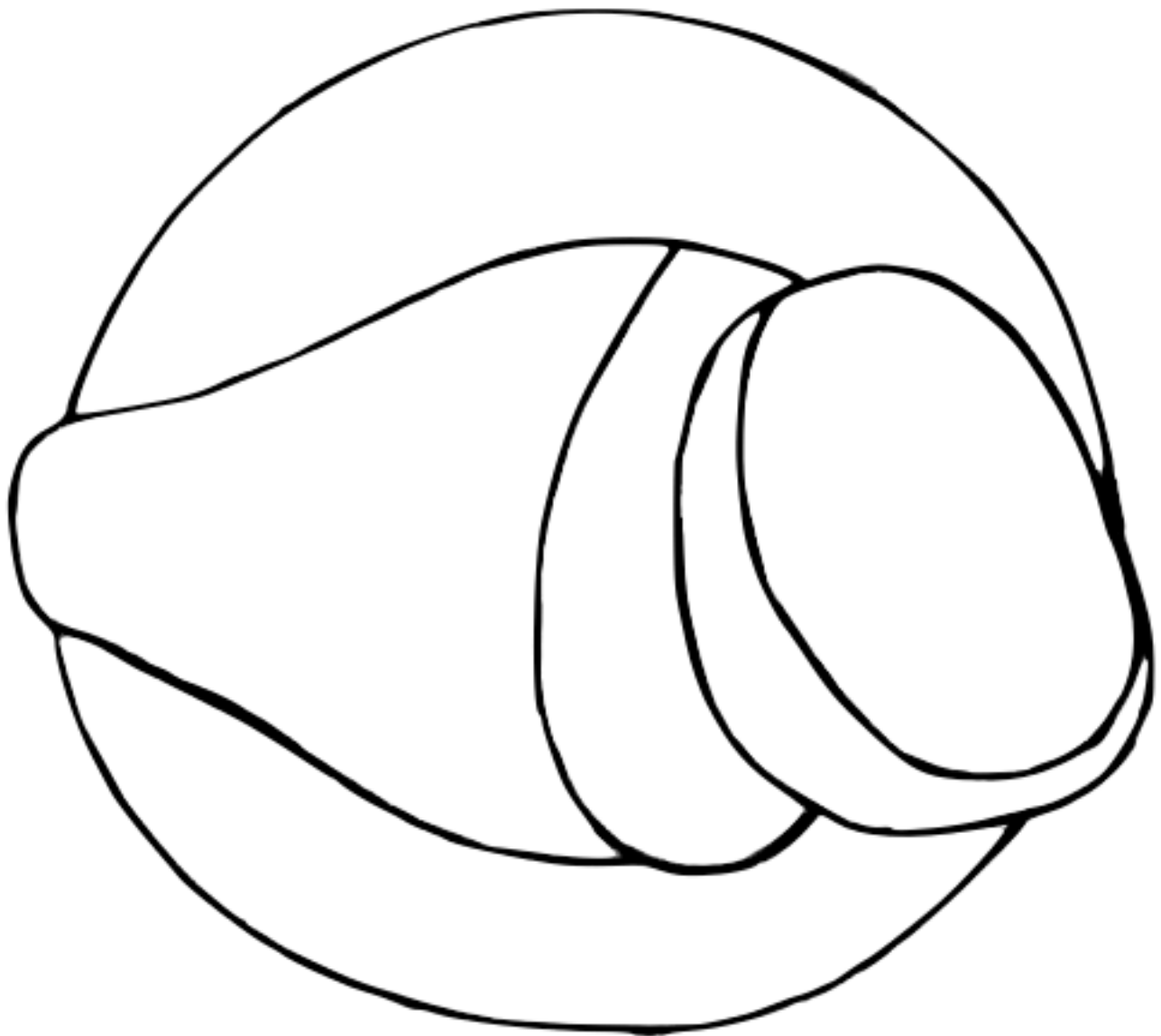
# Scotch Bonnet



This is the Scotch Bonnet Shell and it is found in the Tidewater region. It was discovered in 1778 by Austrian scientist Ignaz von Born. It has two common predators including the blue crab and the Florida stone crab. North Carolina was the first state that had a state shell. It was named the Scotch Bonnet in honor of abundance of Scottish settlers that found the state.

En.wikipedia.org (1852) *Semicassis granulata* - Wikipedia, the free encyclopedia. [online] Available at: [http://en.wikipedia.org/wiki/Scotch\\_bonnet\\_\(shell\)](http://en.wikipedia.org/wiki/Scotch_bonnet_(shell)) [Accessed: 23 Oct 2012].

# Sweet Potato

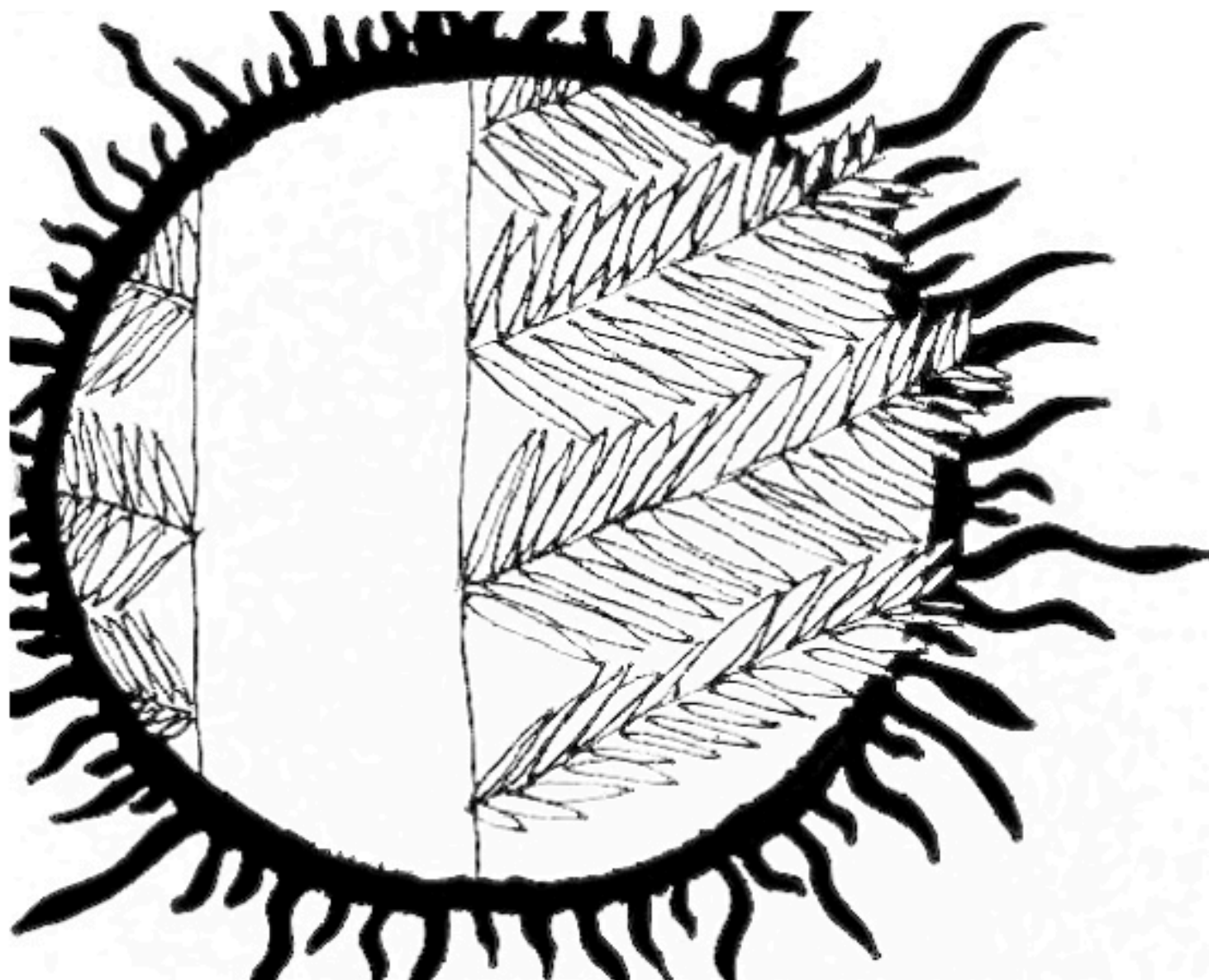


The sweet potato is the official vegetable of North Carolina. Though found mostly in warm regions, sweet potatoes can be found all across North Carolina. In 1995 a large group of students in Wilson County petitioned to appoint the sweet potato as the state vegetable. The sweet potato is the seventh most important food crop in the world in terms of production. It's mainly found in developing countries but over the years it has increasingly become more popular in the United States because of its Vitamin A and C.

Vegetable, Sweet Potato | NCpedia

NCpedia.org (2011) *Vegetable, Sweet Potato* | NCpedia. [online] Available at: <http://ncpedia.org/symbols/vegetable>

# *Frasier Fir*

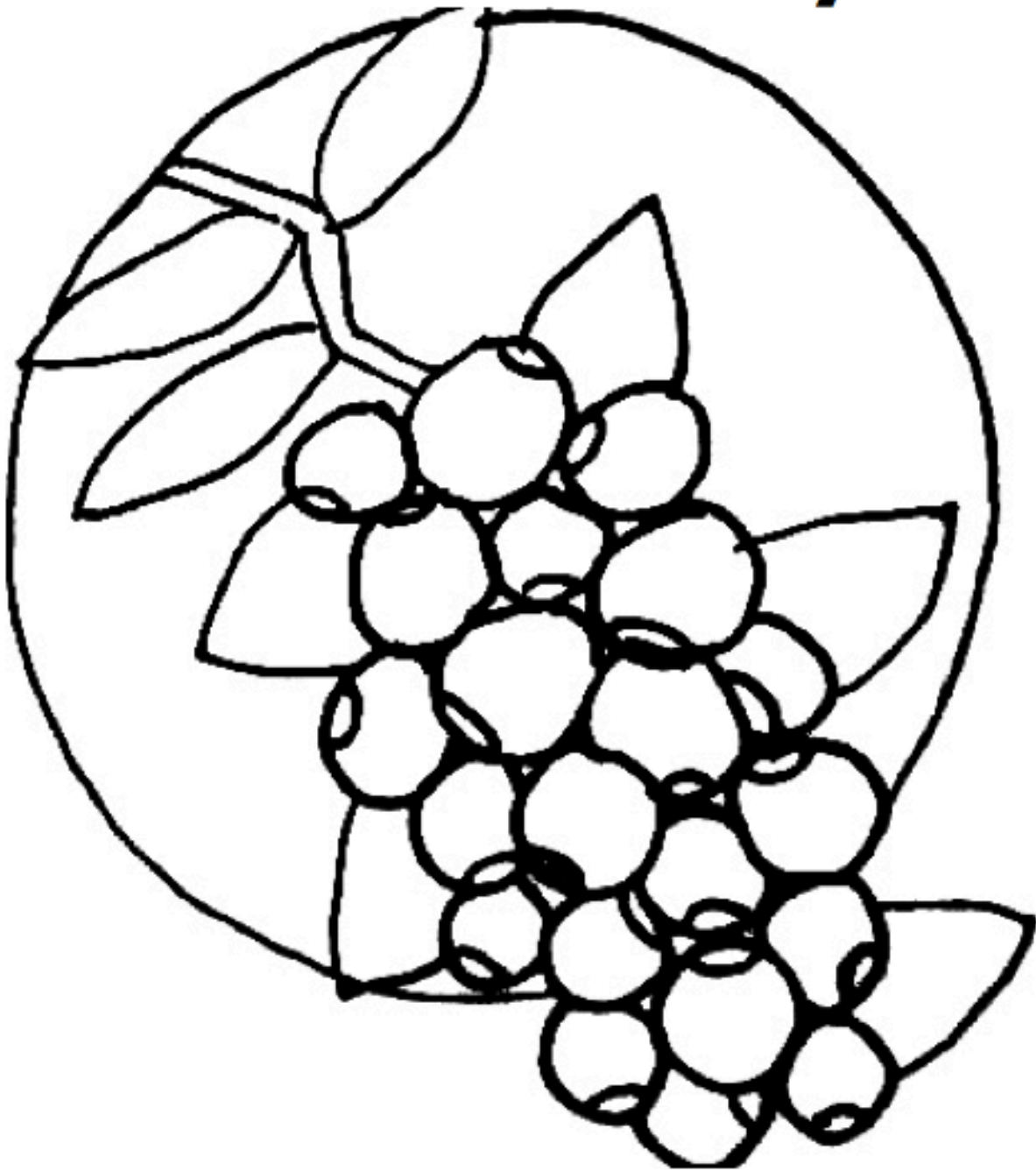


The Fraser Fir is the official tree of North Carolina. It became the official state tree in 1963. This tree is very commonly found in the Mountains range of North Carolina, and it is very famous as the christmas tree that many people use. It helps with the beauty of the mountains, helping them to be greener and fuller. They are very helpful when starting a fire, and they are wonderful trees. Depending on what type, this tree's needles are either very sharp or very soft.

Unknown. (2012) [online] Available at: [https://s3.amazonaws.com/nc\\_book/nc\\_appendix.pdf](https://s3.amazonaws.com/nc_book/nc_appendix.pdf) [Accessed: 23 Oct 2012].



# Blueberry



Blue berries are grown in the mountainous and piedmont regions of North Carolina. They are the official blue berry for our state. Blueberries became one of North Carolina's symbols in 2001. Pender county is second place in North Carolina blue berry production. Blue berries are native to North America. There was 400 million pounds of blue berries produced last year from NC farmers.

Blueberryfestival.com (n.d.) *Blueberry Festival The National Blueberry Festival, South Haven, Michigan* Blueberry Festival | The National Blueberry Festival, South Haven, Michigan. [online] Available at: <http://www.blueberryfestival.com/> [Accessed: 24 Oct 2012].

Southeastfarmpress.com (2004) *Blueberry production packs economic punch* | [primary-term] content from Southeast Farm Press. [online] Available at: <http://southeastfarmpress.com/blueberry-production-packs-economic-punch> [Accessed: 24 Oct 2012].

# Artists

Scuppernong Grape, fruit	Claire H.
Eastern Box Turtle, reptile	Erin M.
Dogwood, flower	Kate S.
Cardinal, bird	Avery J.
Grey Squirrel, mammal	Kyle M.
Brook Trout, freshwater fish	Julia K.
Carolina Lily, wildflower	Noelle S.
Channel Bass, saltwater fish	Briana M.
Honeybee, insect	Kaya B.
Venus Flytrap, carnivorous plant	Monica A.
Strawberry, red berry	Bailey B.
Pine Tree, tree	Michael D.
Plott Hound, dog	Ethan B.
Scotch Bonnet, shell	Cheyenne G.
Sweet Potato, vegetable	Emily T.
Frasier Fir, Christmas tree	Sarah C.
Blueberry, blue berry	Stephanie B.